

Features

- 230VAC / 110VAC Input
- PROTECTION : Shortcircuit, Overvoltage & Overload
- Compact, Low Cost & High Reliability
- 100% Full Load Burn-in test
- LED Indicator for Power on
- Cooling by free air convection
- CE Marked on all models
- 1 Year Warranty

INPUT SPECIFICATION

| | |
|-----------------------|---|
| Voltage Range | 85 - 264VAC 120 - 373VDC |
| Frequency Range | 47 - 63Hz |
| Efficiency | MS-35-5 : 77% MS-35-12 : 81% MS-35-24 : 84% |
| AC Current (typ.) | 0.45A / 230VAC |
| Inrush Current (typ.) | 30A / 230VAC (for cold start at 25°C) |
| Leakage Current | <1mA / 240VAC |

STANDARDS

| | |
|------------------|------------------------------------|
| Safety Standards | Meet the UL1012 requirement |
| EMC Standards | Meet the EN55022 CLASS A Equipment |

SECURITY

| | |
|----------------------|---|
| Isolation Resistance | I/P and O/P ; I/P and FG ; O/P and FG : 100MΩ at 500VDC, 25°C, 70% RH |
| Dielectric Strength | Between I/P and O/P : 1.5kVAC for 1 min Between I/P and F.G : 1.5kVAC for 1 min Between O/P and F.G : 0.5kVAC for 1 min |

OUTPUT SPECIFICATION

| | |
|---------------------|---|
| Rated Current | MS-35-5 : 7.0A MS-35-12 : 3.0A MS-35-24 : 1.5A |
| Rated Power | 35Watts |
| Voltage ADJ. Range | ±10% (with V.ADJ) |
| Voltage Tolerance | ±1% |
| Ripple & Noise(max) | MS-35-5 : 80mVp-p MS-35-12 : 120mVp-p MS-35-24 : 200mVp-p |
| Setup Time | 200ms / 230VAC at full load |
| Rise Time | 50ms / 230VAC at full load |
| Hold Time(Typ.) | 20ms / 230VAC at full load |

OTHER SPECIFICATION

| | |
|-------------------|-------------|
| Weight | 0.17kg |
| Dimension (L*W*H) | 84*58*38 mm |
| Packing | 100pcs/17kg |

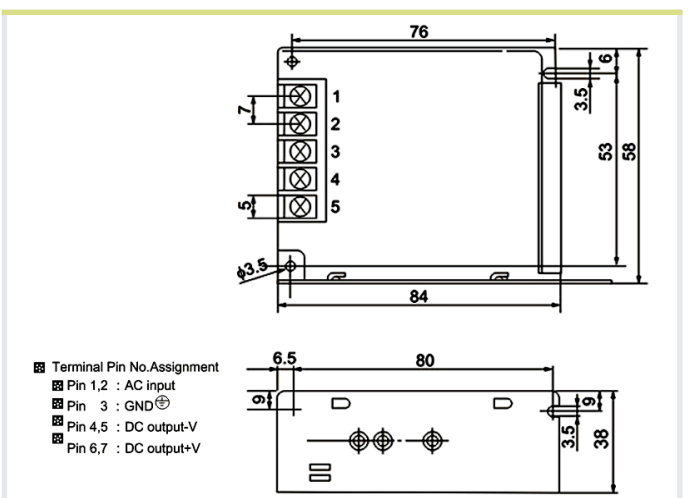
ORDER CODE

| MODEL | VOLTAGE | CURRENT |
|----------|---------|---------|
| MS-35-5 | 5VDC | 7.0A |
| MS-35-12 | 12VDC | 3.0A |
| MS-35-24 | 24VDC | 1.5A |

PROTECTION

| | |
|-------------|---|
| Overload | 100% to 110% rated load current Protection Type : Hiccup mode, recovers automatically after fault condition is removed |
| Overvoltage | Protection Type : Shutdown output voltage, re-power on to recover |

DIMENSIONS



ENVIRONMENT

| | |
|----------------------|--|
| Temperature | Working : -20°C to +60°C (derating is required according to temperature) Storage : -40°C to +85°C (with no icing or condensation) |
| Humidity | Working : 20% to 90% RH Storage : 10% to 95% RH |
| Vibration Resistance | 10 to 500Hz, 10min/1cycle (2G) for 60min each in X, Y, Z directions |