

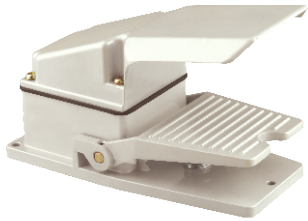
Manufactures Low Voltage Switchgears
 All Types of Micro Switches, Limit Switches & Foot Switches

BFS-04 SERIES

Technical Specification

Rating : 10A / 500V AC, 15A / 250V AC,
 Body Material : Aluminium pressure die casting
 Contact Material : Silver Cadmium Oxide
 Terminal : Brass

Order Code	Description	Contact Form	Rating
BFS-04/B	Foot Switch Without Wire	SPDT	15A / 250 V AC
BFS-04/B/C2.2	With 2 Core 2 Meter Wire	SPDT	15A / 250 V AC
BFS-04/X	Foot Switch Without Wire	SPDT-DB	10A / 500 V AC
BFS-04/XX	Foot Switch Without Wire	DPDT-DB	10A / 500 V AC
BFS-04/Z/C2.2	Push To ON, Push To OFF	SPST POPO	10A / 250 V AC



BFS-05 SERIES

Technical Specification

Rating : 10A / 500V AC, 15A / 250V AC,
 Body Material : Aluminium pressure die casting
 Contact Material : Silver Cadmium Oxide
 Terminal : Brass

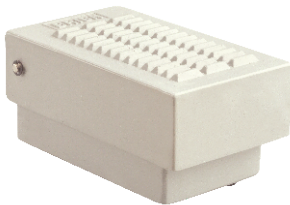
Order Code	Description	Contact Form	Rating
BFS-05/B	Foot Switch Without Wire	SPDT	15A / 250 V AC
BFS-05/B/C2.2	With 2 Core 2 Meter Wire	SPDT	15A / 250 V AC
BFS-05/X	Foot Switch Without Wire	SPDT-DB	10A / 500 V AC
BFS-05/XX	Foot Switch Without Wire	DPDT-DB	10A / 500 V AC
BFS-05/Z/C2.2	Push To ON, Push To OFF POPO	SPST POPO	10A / 250 V AC
BFS-05/Z/C2.4	Push To ON, Push To OFF POPO	SPST POPO	10A / 250 V AC

BFS-06 SERIES

Technical Specification

Rating : 6 A / 250V AC
 Body Material : Rubber
 Contact Material : Silver Cadmium Oxide
 Terminal : Brass

Order Code	Description	Contact Form	Rating
BFS-06/C2.2	Capsule type Foot switch With 2 Core 2 Meter Wire	SPST-NO	6A / 250 V AC



BFS-07 SERIES

Technical Specification

Rating : 10 A / 250V AC
 Body Material : Aluminium pressure die casting
 Contact Material : Silver Cadmium Oxide
 Terminal : Brass

Order Code	Description	Contact Form	Rating
BFS-07/Y	Trigger type Foot switch	DPDT-NO	10A / 250 V AC

BFS-08 SERIES

Technical Specification

Rating : 10 A / 250V AC
 Body Material : Aluminium pressure die casting
 Contact Material : Silver Cadmium Oxide
 Terminal : Brass

Order Code	Description	Contact Form	Rating
BFS-08/LS	Heavy Duty Foot Switch, Without Guard	2 DPDT-CO	10A / 250 V AC
BFS-08 /LS/H	Heavy Duty Foot Switch with Handle, Without Guard	2 DPDT-CO	10A / 250 V AC



BFS-09 SERIES

Technical Specification

Rating : 10 A / 250V AC
 Body Material : Aluminium pressure die casting
 Contact Material : Silver Cadmium Oxide
 Terminal : Brass

Order Code	Description	Contact Form	Rating
BFS-09/LS	Heavy Duty Foot Switch, With Guard	2 DPDT-CO	10A / 250 V AC

